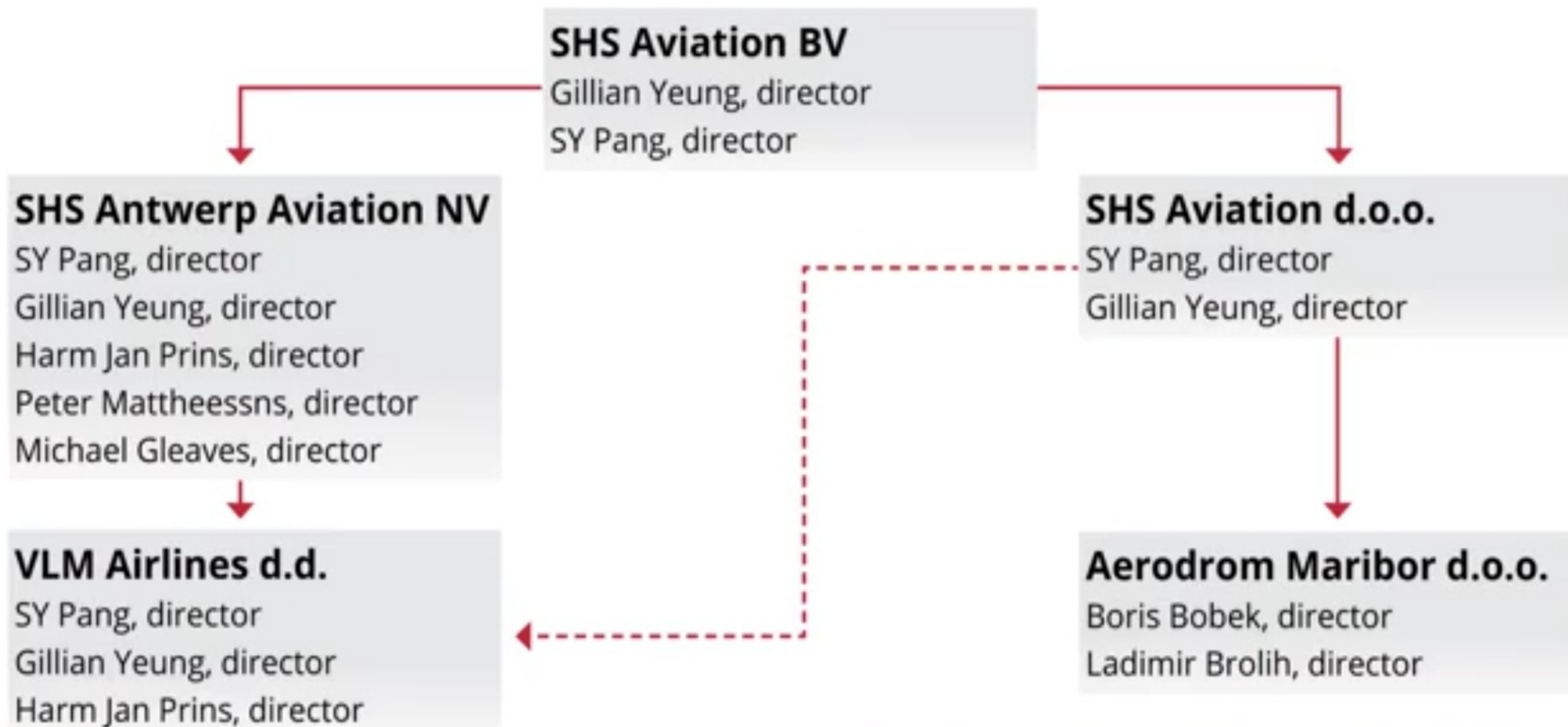


# Organization Structure of SHS Group



# *Activities of SHS Group in Aerodrom Maribor*

Passenger  
traffic



Cargo  
traffic





# *Activities of SHS Group in Aerodrom Maribor*

Pilot  
training



Circular economy -  
Disassembly/dismantling  
of aircrafts

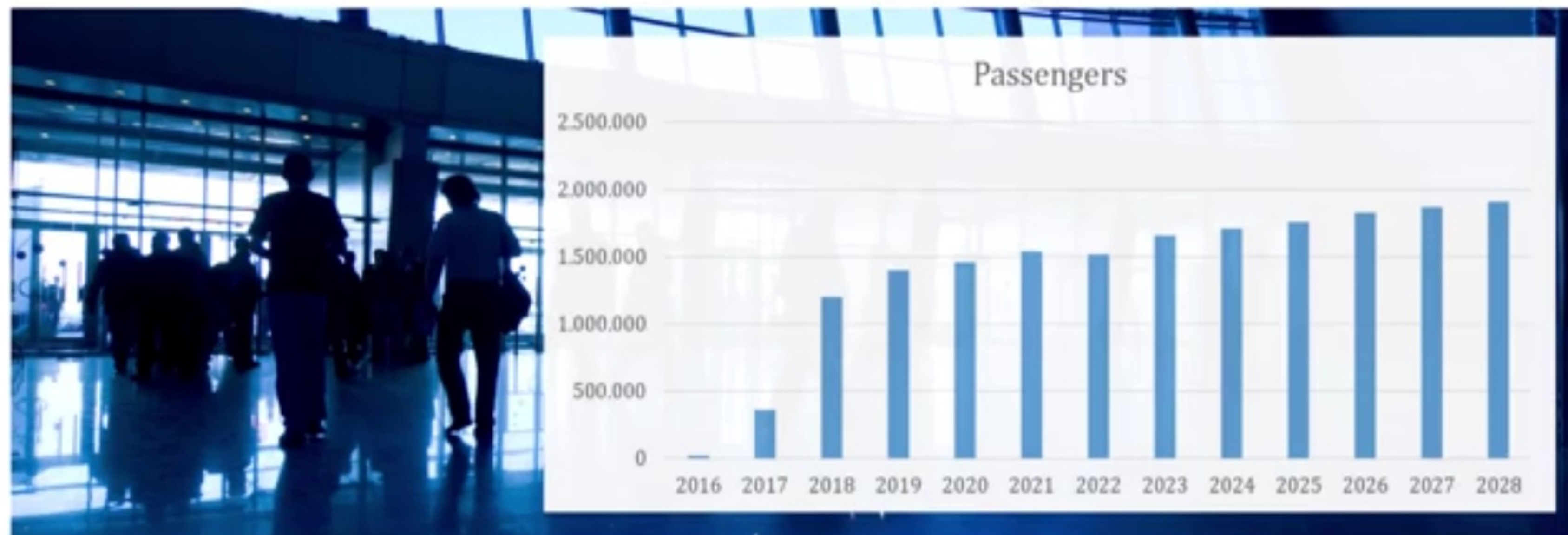


Service  
aircraft center



# *Passenger Flow*

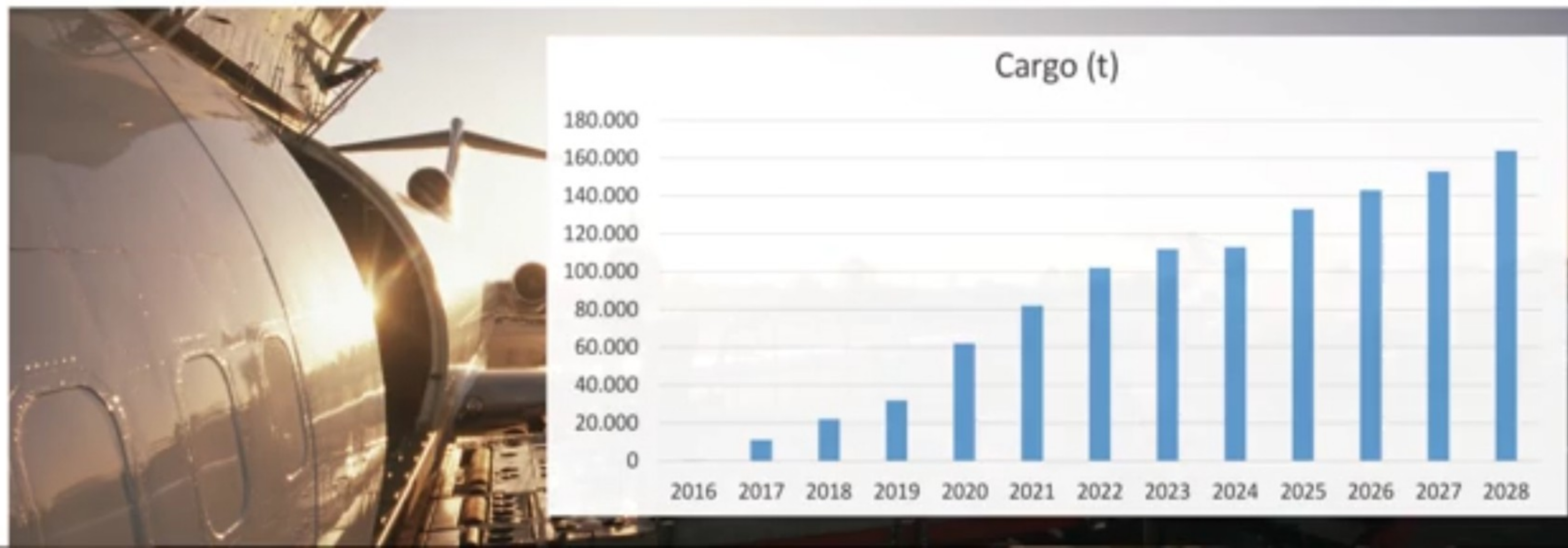
In the Chart below we can see Passenger flow per operation/year.





# *Cargo Flow*

In the Chart below we can see Cargo flow per operation/year.



# *Flight Simulator Center*

We have considered that in the next year, the opening of the Simulation center for pilot training.



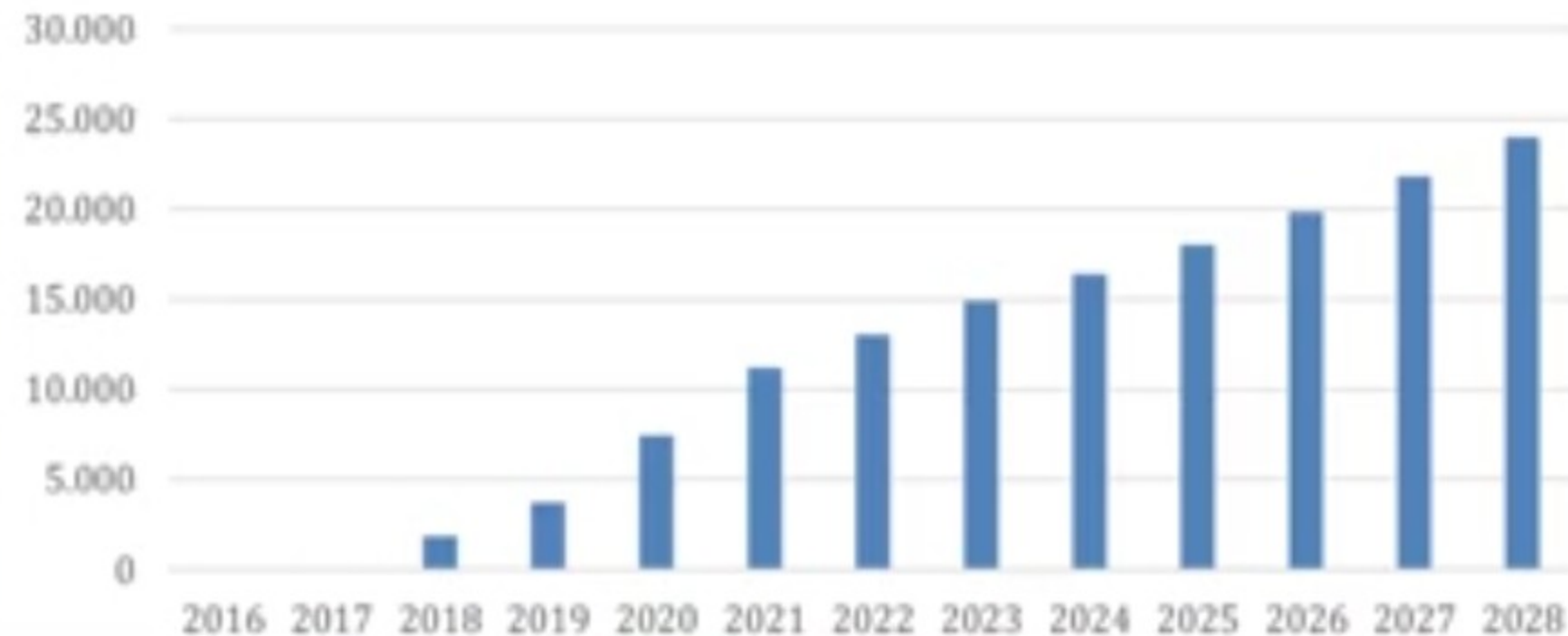


# *Circular Economy: Disassembly/ dismantling of aircrafts*

Our wish is to cooperate with Maribor Municipality in „Wcycle“ policy.  
Maribor is possible a hub for circular economy for Southeast Europe.



Disassembly/ dismantling (hours/year)



# *Aircraft Service Center*

Aerodrom Maribor will also work as service center for regional jets.





# *Development of Aerodrom Maribor*

- Runway extention
- Cargo center
- Exhibition center
- New terminal
- Aircraft service center
- Shoping mall and office tower
- Hotel and service apartment

**Total investment:**  
**aprox.: 300 million €**





# *Development of Aerodrom Maribor*

We are working on detail planning.





*VLM*

**Belgium:** SHS Antwerp Aviation NV (operating as VLM Airlines)

**Slovenia:** VLM Airlines d.d.

SHS Group has submitted applications for AOC  
(Aircraft operation certificate)  
in both countries.

After we receive AOC licence we  
will start operation in one month.



# *Aircraft fleet*

## **FOKKER 50**

(6 aircrafts)



## **A320-200**

(6 aircrafts)



## **A330-200**

(15 aircrafts)



A320 and A330-200 aircrafts will be registered in Slovenia.

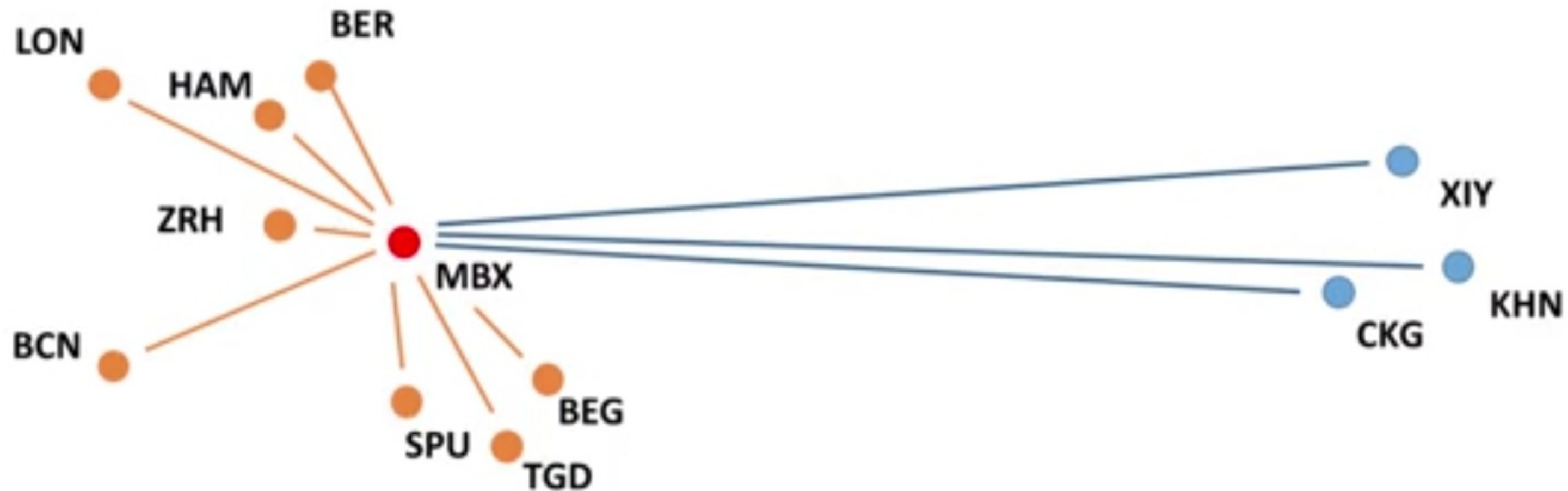


# *Expected flights 2017*

**EU:** London, Berlin, Hamburg, Barcelona, Zürich, Belgrade, Split, Podgorica

**AS:** Xi'an, Chongqing, Nanchang

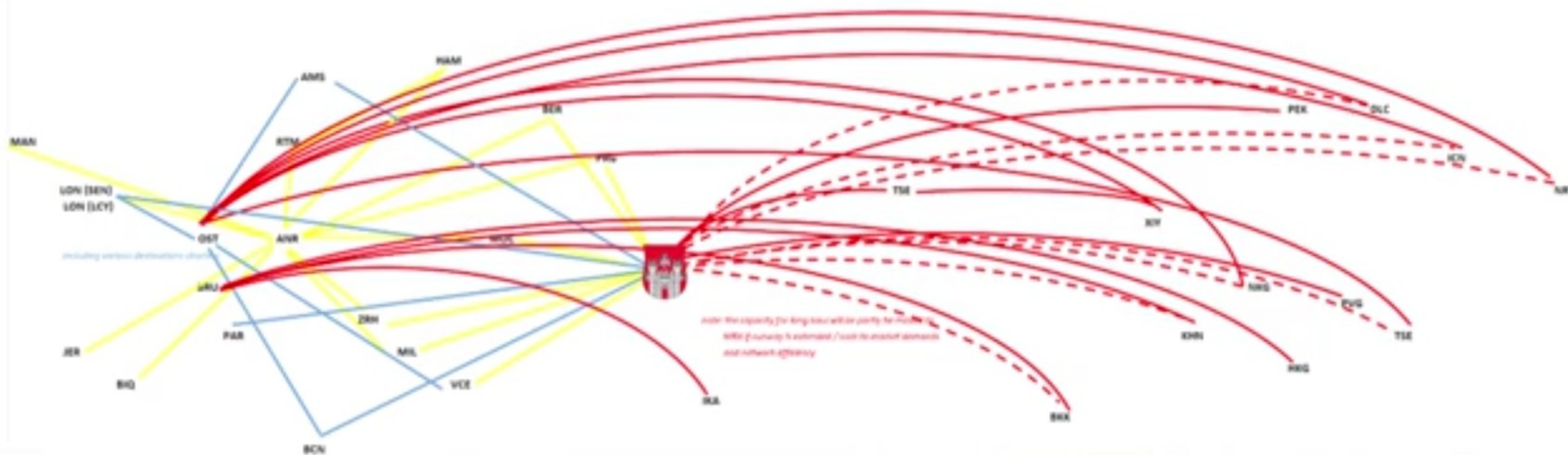
All those flights can be established without runway extension.



*Expected flights 2018*

After extention of runway.

NETWORK VLM NEWCO / FASE Q1-18





# *Extention of Runway in 2 Phases*

- Today 2.500 m,
- Within 9 months with OPN (Local municipality plan Hoče-Slivnica) extention to 3.300 m,
- Within 2 years with DPN (Governmental plan) extention to 3.800 m





# *One Belt One Road*





# *Opportunities for Slovenia and Maribor economy*

Airport with good transportation connection to Europe and Asia is opening a lot of opportunities for:

- **Trade,**
- **Tourism,**
- **Investments in Slovenia.**



With our network of partners in Europe and Asia, there is a lot of business opportunities opening to local enterprises for the following industries:

- **Tourism,**
- **Food products,**
- **Real estate development,**
- **Services.**